

Adobe Login for Faculty & Staff

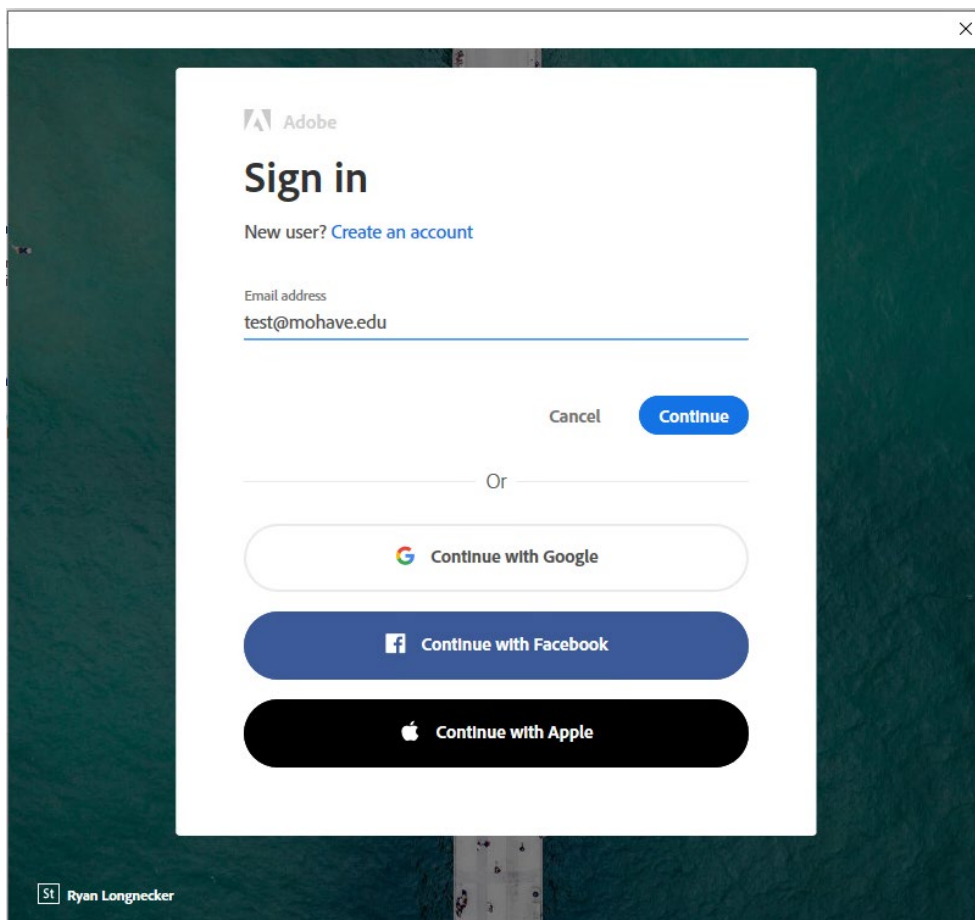
Adobe now requires login access in order to use Adobe Acrobat DC and Adobe Creative Cloud applications in the enterprise environment. However, not all faculty and/or staff may need the full version of Adobe. Here is the difference between **Adobe Acrobat DC (full version)** and **Adobe Acrobat Reader DC (free version)**:

Adobe Acrobat Reader DC: use to open, read, and sign PDFs

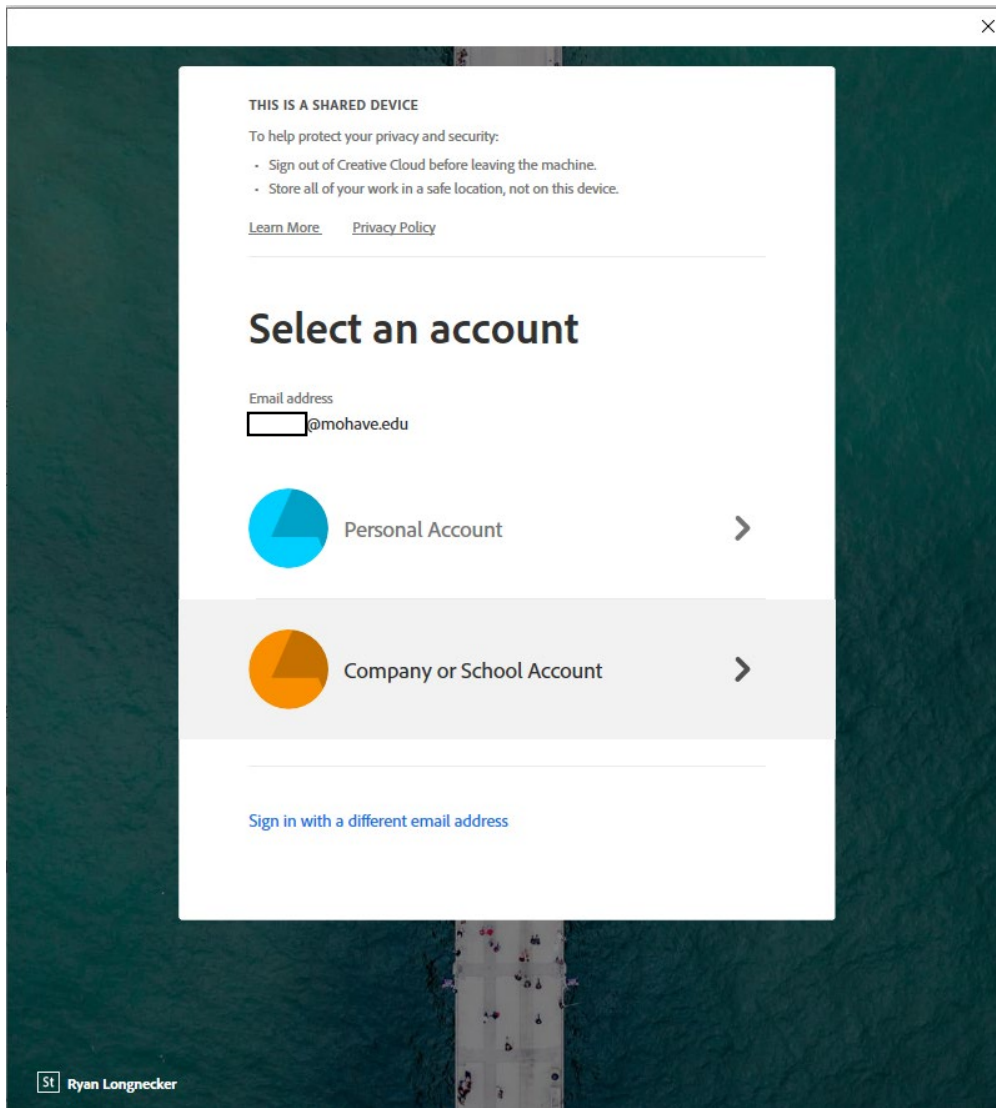
Adobe Acrobat DC: does everything Acrobat Reader does as well as edit PDFs (combine, convert, organize, etc.)

If you need Adobe Acrobat Reader DC installed on your machine or need access to Adobe Acrobat DC, please submit a ticket at servicedesk.mohave.edu specifying which version you will need.

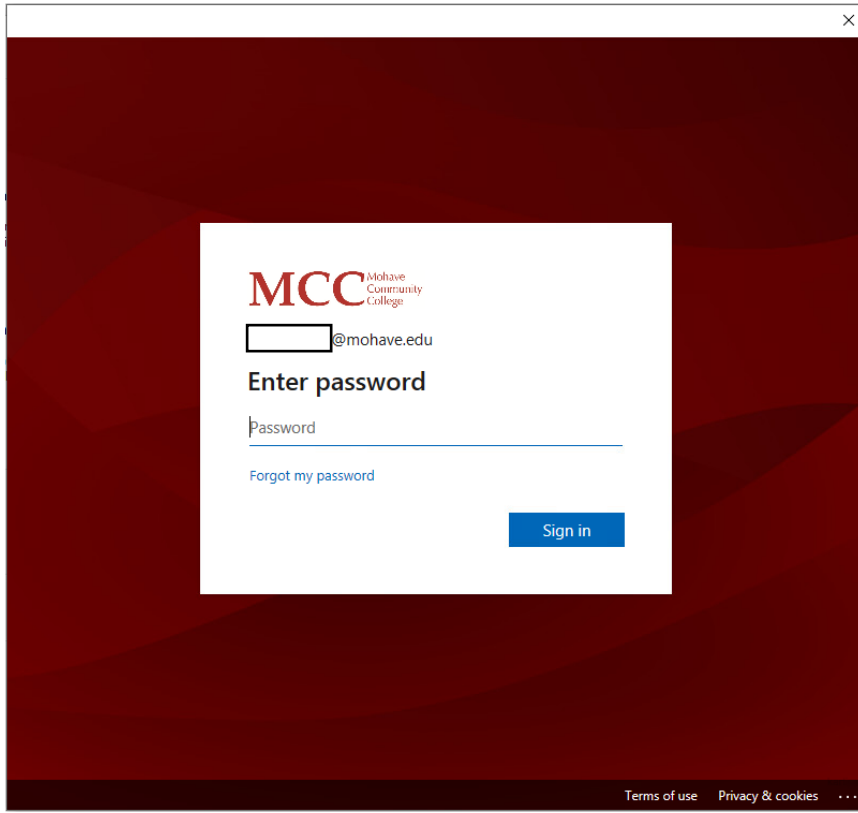
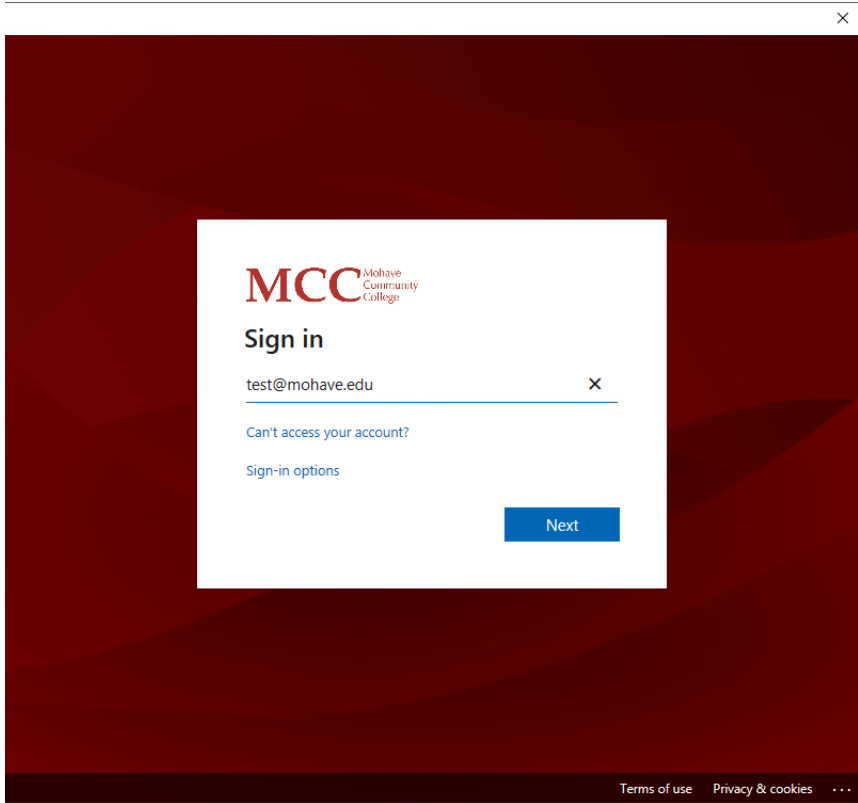
When you open Adobe Acrobat DC or a PDF using Adobe Acrobat DC, you will see the Sign in page:



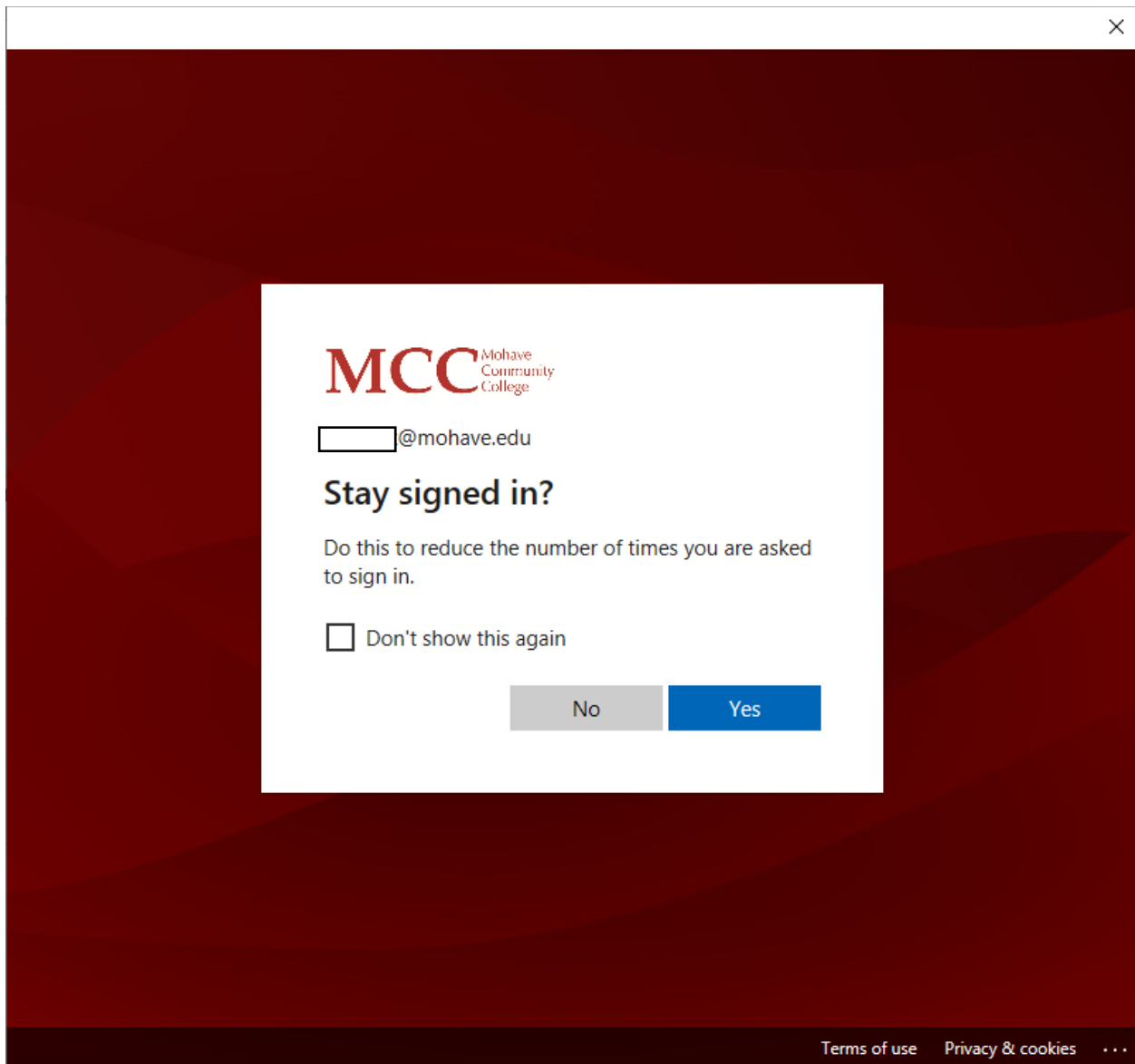
After typing in your school email address and clicking continue, click on **Company or School Account**:



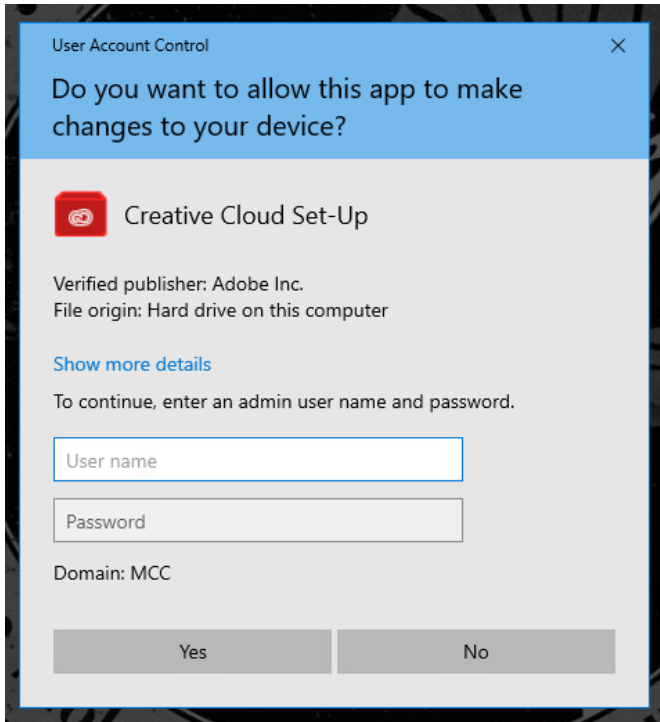
You will be sent to the single sign on page where you will need to retype in the email address, but this time it will ask for your password afterwards:



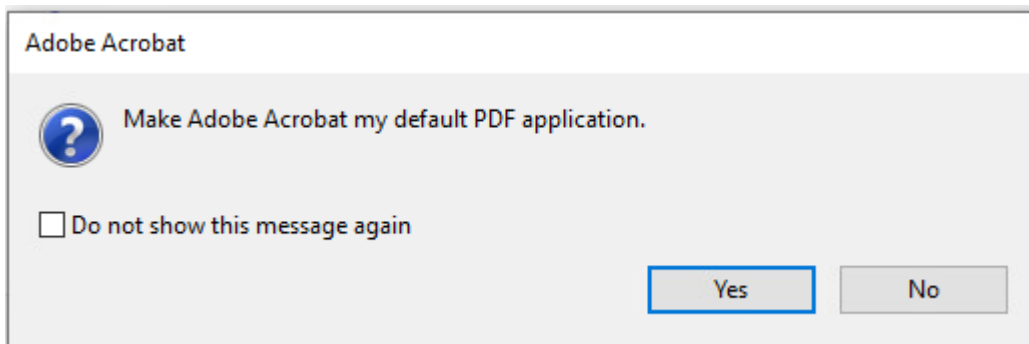
Select Yes for machines you log into daily. This option is not recommended for public machines or temporarily used machines.



If the Creative Cloud Set-Up window opens up, click the X on the top right-hand side of the window to close it out.

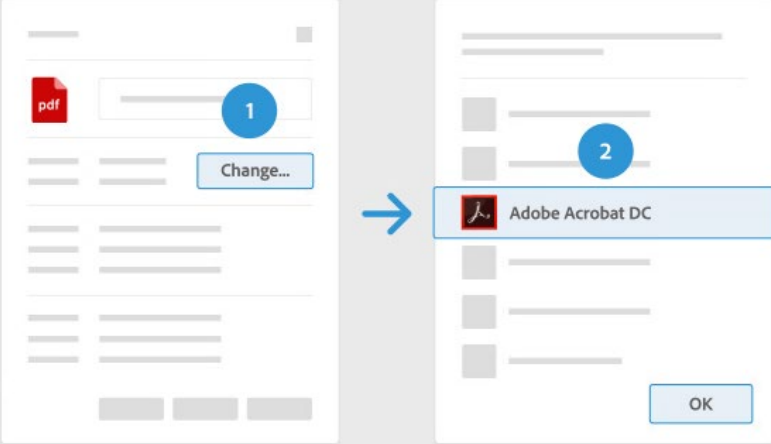


You can choose to make Adobe Acrobat as the default PDF application at this time if it is not the default application.



Associate PDF file type
Click 'Change'

Select default app
Choose 'Adobe Acrobat' and click 'OK'



1

Change...

2

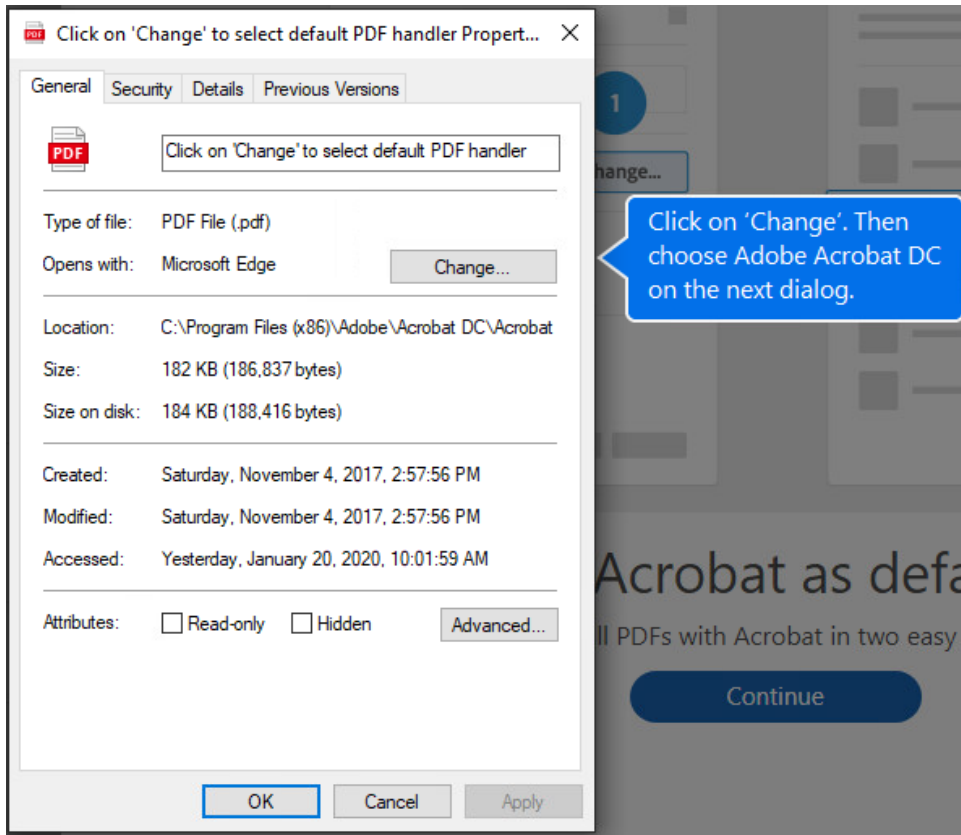
Adobe Acrobat DC

OK

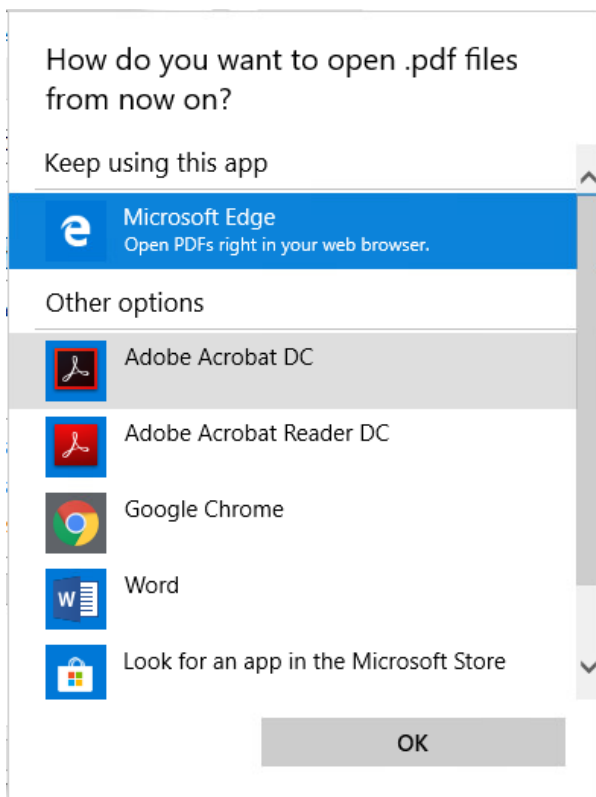
Set Acrobat as default.

View all PDFs with Acrobat in two easy steps.

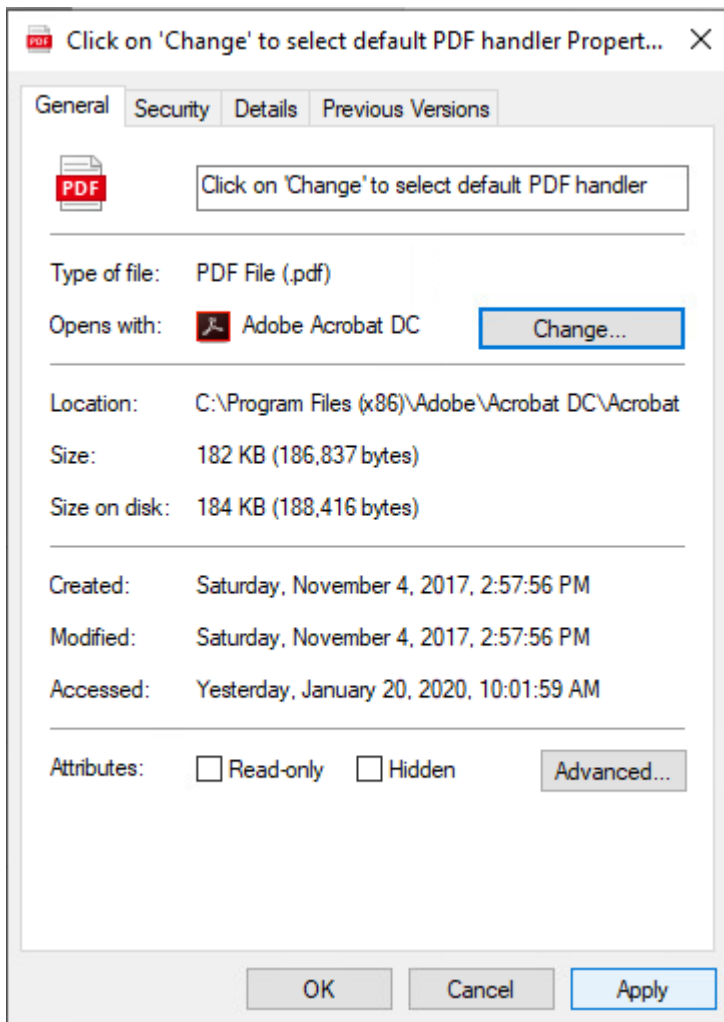
Continue



Change the default from Microsoft Edge to Adobe Acrobat DC.



Click Apply, then OK



Adobe Acrobat DC is now available for use. Here is a direct link from Adobe for staff/faculty Enterprise ID login instructions:

- [Sign in to Adobe apps and website with your company or school email](#)